

Projeto IMPRINT+

Da consciência da pegada individual à ação coletiva.



IMPRIint+



Co-funded by the
Erasmus+ Programme
of the European Union

2015-1-PT01-KA201-012976

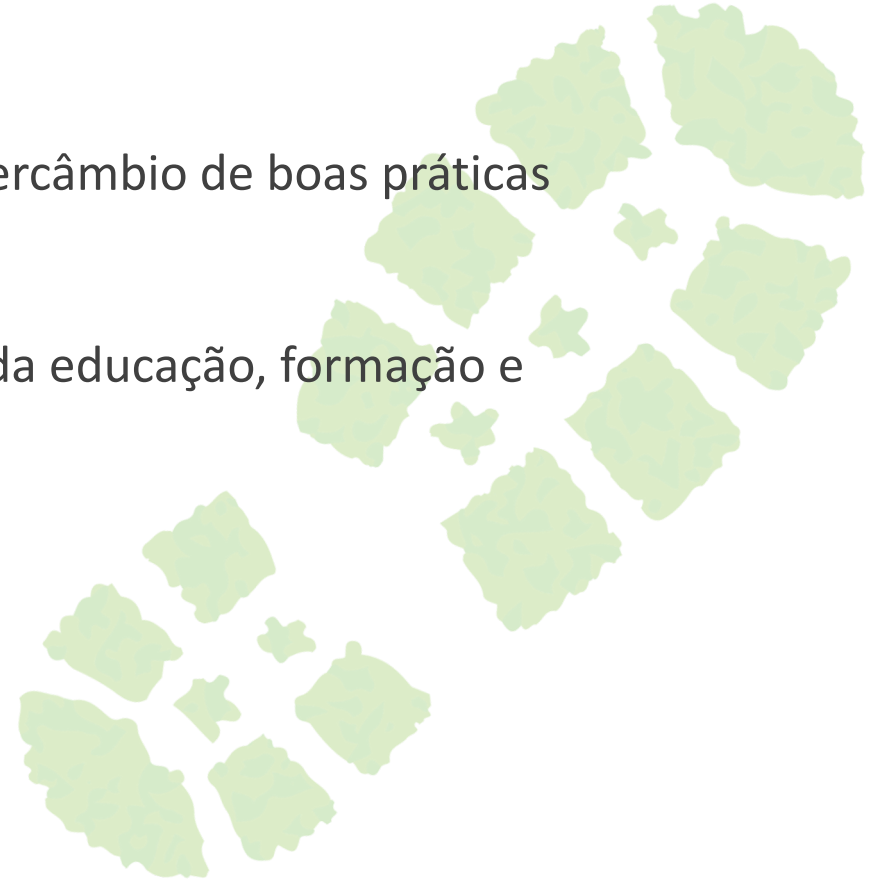
*'No final, preservamos apenas aquilo que amamos.
Amamos só aquilo que compreendemos.
Compreendemos só aquilo que nos é ensinado.'*

Baba Dioum



Ação-Chave 2 (KA2):

- Cooperação para a inovação e o intercâmbio de boas práticas
- Parcerias estratégicas nos domínios da educação, formação e juventude



O impacto da Ação-Chave 2 visa:

- Maiores sinergias e ligações e uma melhor transição entre os diferentes sistemas de educação, formação e juventude;
- Nova e maior cooperação inter-regional e transfronteiriça dos poderes públicos nos domínios da educação, formação e juventude;
- Utilização mais estratégica e integrada das TIC e dos recursos educativos abertos;
- Interação reforçada entre prática, investigação e política;
- Reforço de capacidades no domínio do ensino superior;
- Reforço de capacidades no domínio da juventude.

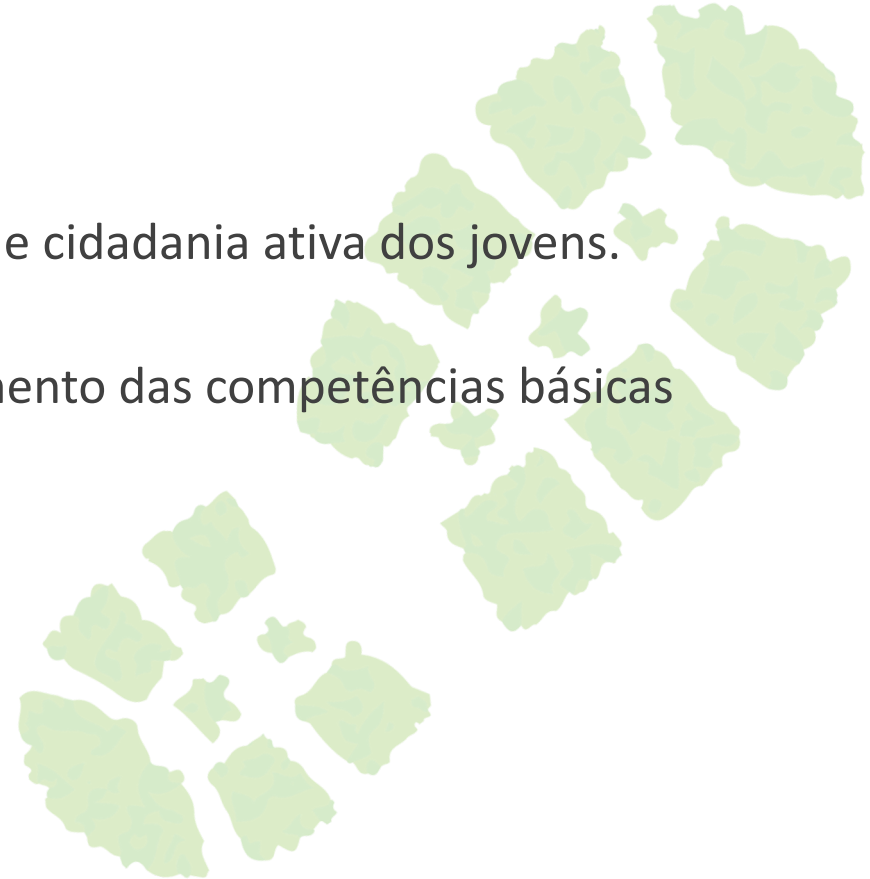
Compensação ecológica

- Pegada ecológica ‘positiva’ ou, no mínimo, nula
- Educação ou Formação-Ação
 - Consciencialização
 - Voluntariado
 - Novos currículos; validação da educação informal e não-formal
 - Gestão social do património
- Ação local
 - Beneficiação do ecossistema
 - Economia de recursos públicos
 - Novos contextos de trabalho no município
 - Município-exemplo de boas práticas



Estratégia
Europa 2020

- 1) Desenvolver as competências básicas e transversais utilizando métodos inovadores
- 2) Promover a capacitação, participação e cidadania ativa dos jovens.
- 3) Estratégias eficazes para o enriquecimento das competências básicas
 - Literacia
 - Numeracia
 - Ciência
 - Tecnologia
 - Línguas





Portugal: Universidade de Aveiro



Portugal: Município de Lousada



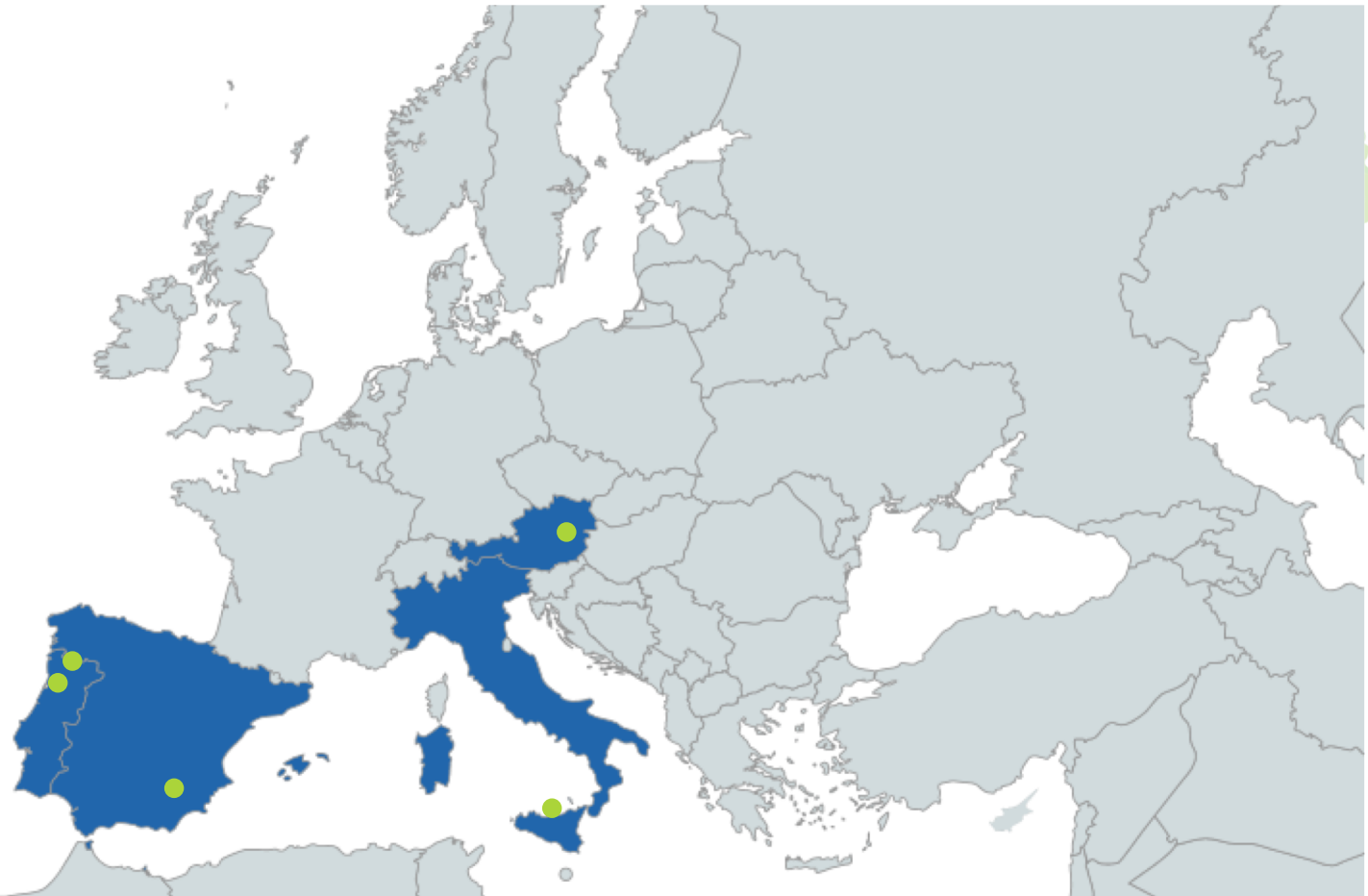
Espanha: IES Pedro Jiménez Montoya (Baza)



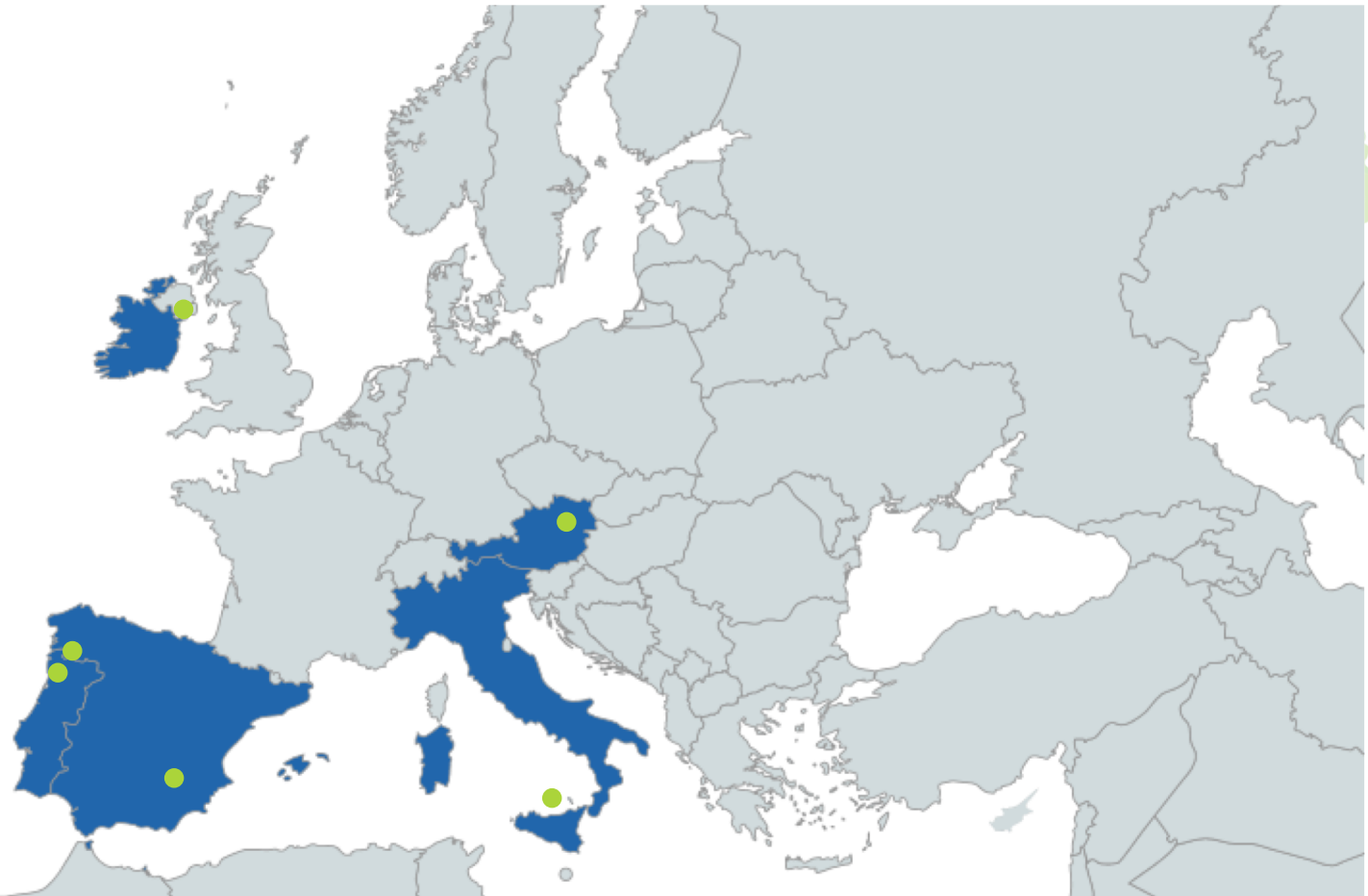
Itália: IISS Cipolla-Pantaleo-Gentile (Castelvetro)



Áustria: E.N.T.E.R. (Graz)



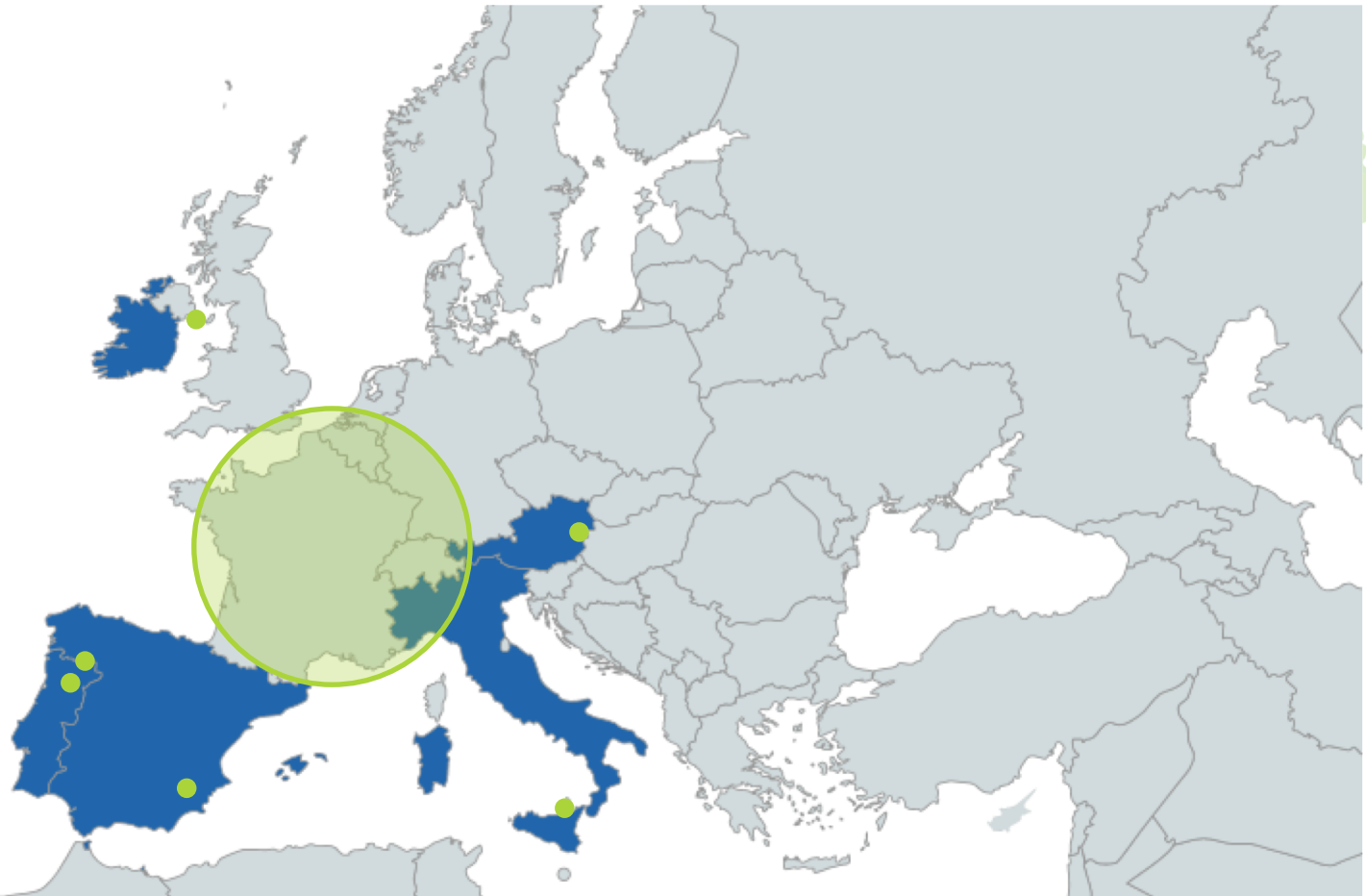
Irlanda: LeaveNoTrace (Dublin)



- Construir uma estratégia para salientar o conceito “*Qualquer ação gera um impacto*” entre os jovens cidadãos em idade escolar.
- Desenvolver ações e ferramentas que vão ajudar os jovens cidadãos a aprender como calcular o impacto da sua pegada e medidas de compensação que podem localmente aplicar.
 - Criar tutoriais e formar professores e técnicos da administração local.
 - Criar aplicações informáticas para estimular a participação (jogos).
- *Pensar globalmente, agir localmente.*
- Repetir as ações do projeto em diferentes países Europeus: um bom plano de divulgação, em várias línguas, ferramentas online, grande envolvimento do público.

- Português
- Espanhol
- Italiano
- Alemão
- Inglês

+ Francês





Produtos/
Outputs



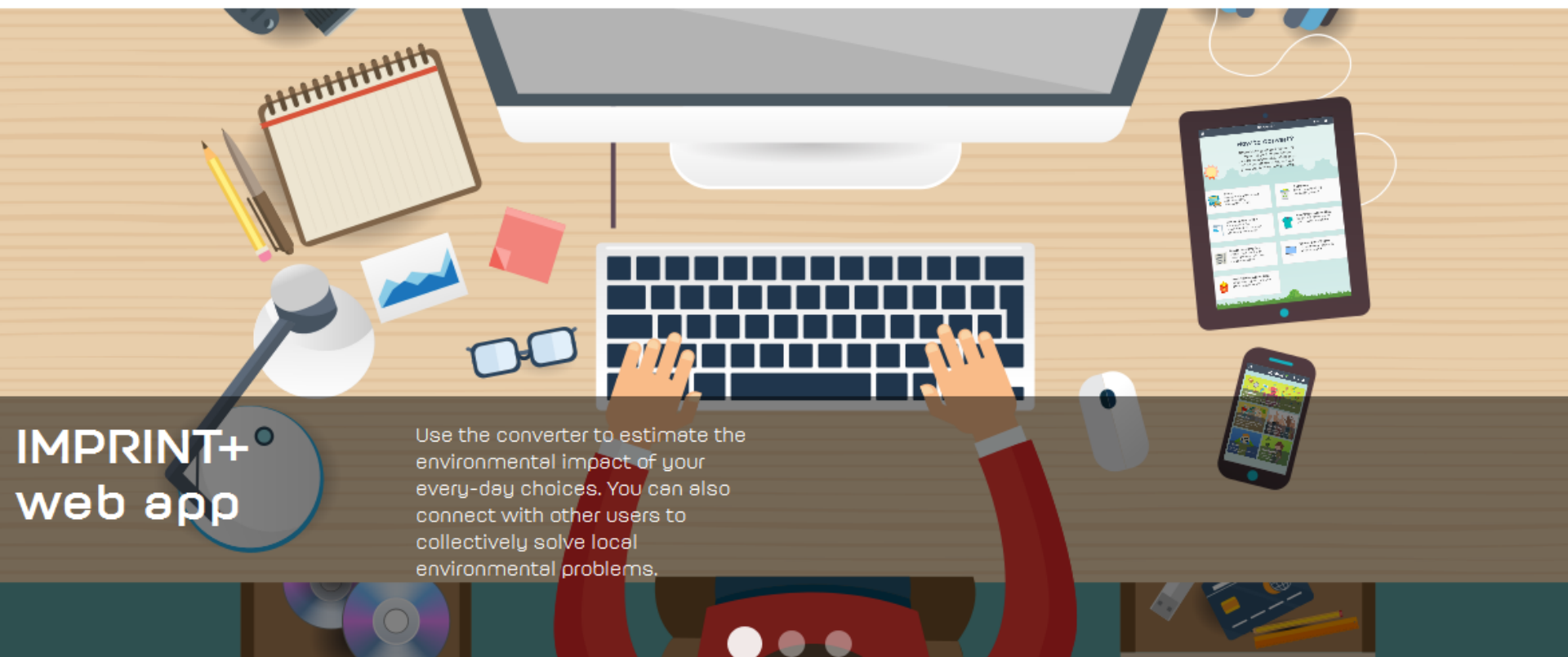
Ações de
formação



Eventos de
Divulgação



- 1) Relatório de Pesquisa: situação de referência e estado da arte
- 2) Pacote de formação/curso certificado para professores e técnicos educativos
- 3) Tutorial para a avaliação independente dos impactos ecológicos e planeamento das medidas de compensação
- 4) Programa piloto
- 5) Aplicação informática (smartphone/tablet) para calcular a pegada ecológica e sugerir medidas de compensação
- 6) Plataforma Online com uma base de dados associada
- 7) Pacote de Divulgação
- 8) Tutorial para os jovens empreendedores sobre uma economia verde
- 9) Relatório final: IMPRINT+: contribuições para gerar uma consciência ecológica na sociedade através dos jovens cidadãos



IMPRINT+
web app

Use the converter to estimate the environmental impact of your every-day choices. You can also connect with other users to collectively solve local environmental problems.



Use the App to:

- Register your IMPRINT+ profile;
- Explore your ecological impact and learn what you can do to compensate;
- Discover what actions and needs were identified by your local community;
- Submit your own observations and actions;
- Create environmentally active local communities;
- Find out your IMPRINT+ ranking.



Use the website to:

- Learn about IMPRINT+;
- Discover the Pilot Program in Lousada, Portugal;
- Acquire knowledge about sustainability issues;
- Download reports, course material and other documents;
- Learn about the latest news from IMPRINT+ participants all over Europe;
- Register to IMPRINT+ newsletter.



Use the tutorials to:

- Assess the ecological wealth of an area;
- Learn about green entrepreneurship.

IMPRINT+ Training Course

The objective of IMPRINT+ Training Course is to train teachers and trainers so that they can spread the IMPRINT+ message, replicate the training and raise awareness in their areas of influence.



The conceptual cornerstone

IMPRINT+ is based on three main ideas that act as guidelines and building blocks for the project's philosophy, objectives and methodology:
Learn. Act. Connect.



Learn

Learn about yourself, the world and how much you care about it. Use IMPRINT+ to raise your environmental consciousness and ecological thinking to protect Earth. Be aware that this is a planet with finite resources that we all share



Act

Be the change you want to see in the world! Be a print+ and leave a positive footprint in the planet! Whether by planting trees, collecting garbage or building ponds, act to make a change!



Connect

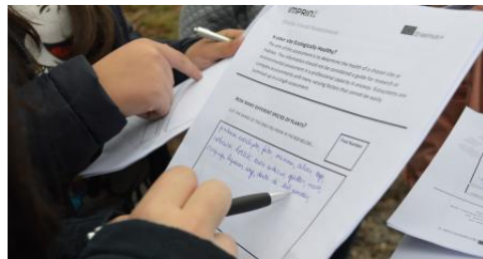
IMPRINT+ aims to promote and empower active community networks – sharing knowledge and best practices – as a keystone for solving local environmental problems. The transnational nature of the project will also strengthen the bonds among citizens within a European framework.

Documents

[Download all](#)


Reports

Here you can download the official IMPRINT+ reports. The initial research report is divided in three parts. You can download each part separately or the whole document, as you prefer! The project's final report will be available in 2018.

[Download](#)


Tutorials

Do you have an area where you want to take environmental action, but do not know how to start? No problem! Download the IMPRINT+ "Ecological assessment tutorial" here. Learn the ecological strengths and weaknesses about your area, and start acting!

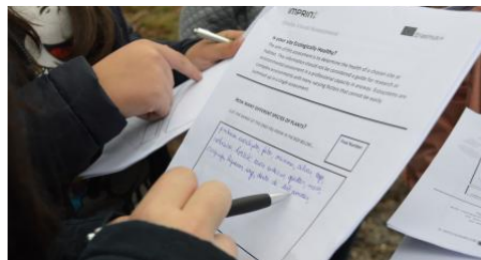
[Download](#)

Documents

[Download all](#)


Reports

Here you can download the official IMPRINT+ reports. The initial research report is divided in three parts. You can download each part separately or the whole document, as you prefer! The project's final report will be available in 2018.

[Download](#)


Tutorials

Do you have an area where you want to take environmental action, but do not know how to start? No problem! Download the IMPRINT+ "Ecological assessment tutorial" here. Learn the ecological strengths and weaknesses about your area, and start acting!

[Download](#)


IMPRINTING SUSTAINABILITY: From Theory to Practice

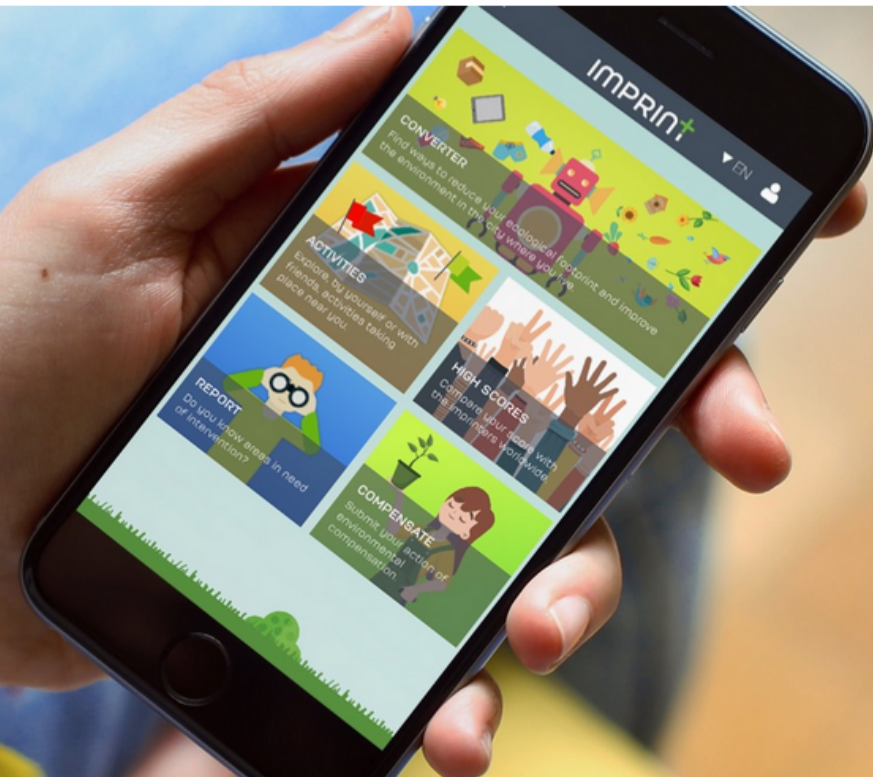
PART I - ENVIRONMENTAL SUSTAINABILITY FRAMEWORK: AN OVERVIEW

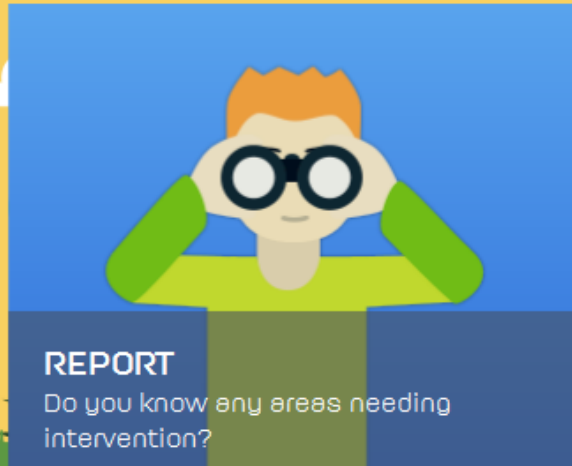
In Part I you get all the basic introductory theory and data to contextualize IMPRINT+.

Imprint+ app

We have developed an innovative Web App for your desktop and mobile devices that will allow you to participate in IMPRINT+ wherever you are! Find out more!

Explore the app





Convert



Travelling

Do you prefer walking and cycling or going everywhere by car?



Shower

Compensate the environment for the water you waste in the shower.



Clothing

Do you still have room for your clothes and shoes?



Paper

Are you from the paper age or you only use tablets?



Electronic Entertainment

Do you have a screen for appendix?



Fast food

When was the last time you had a meal in a shopping center?

Convert

Public transport



Everyday

Sometimes

Daily, on average, how many minutes do you travel?

30 minute(s)

◀ Back

Convert ▶

Convert

How to compensate?

To compensate your impact, every year, you should



Trees

Plant 2 native tree(s)!

Even with a lower average consumption per capita, public transportation uses roads or railroads. Building them causes deforestation that can be compensated by planting trees.



Convert

How to compensate?

To compensate your impact, every year, you should



Invasive species

Remove 3 m² of alien invasive plants!

Road and railroad construction turns the landscape more vulnerable to the establishment and dissemination of exotic species. By using public transportation, you reduce your energy consumption. Help also to compensate the impact of invasive species, by removing them.



Report

▼ EN Hi, Milene!

NEW REPORT

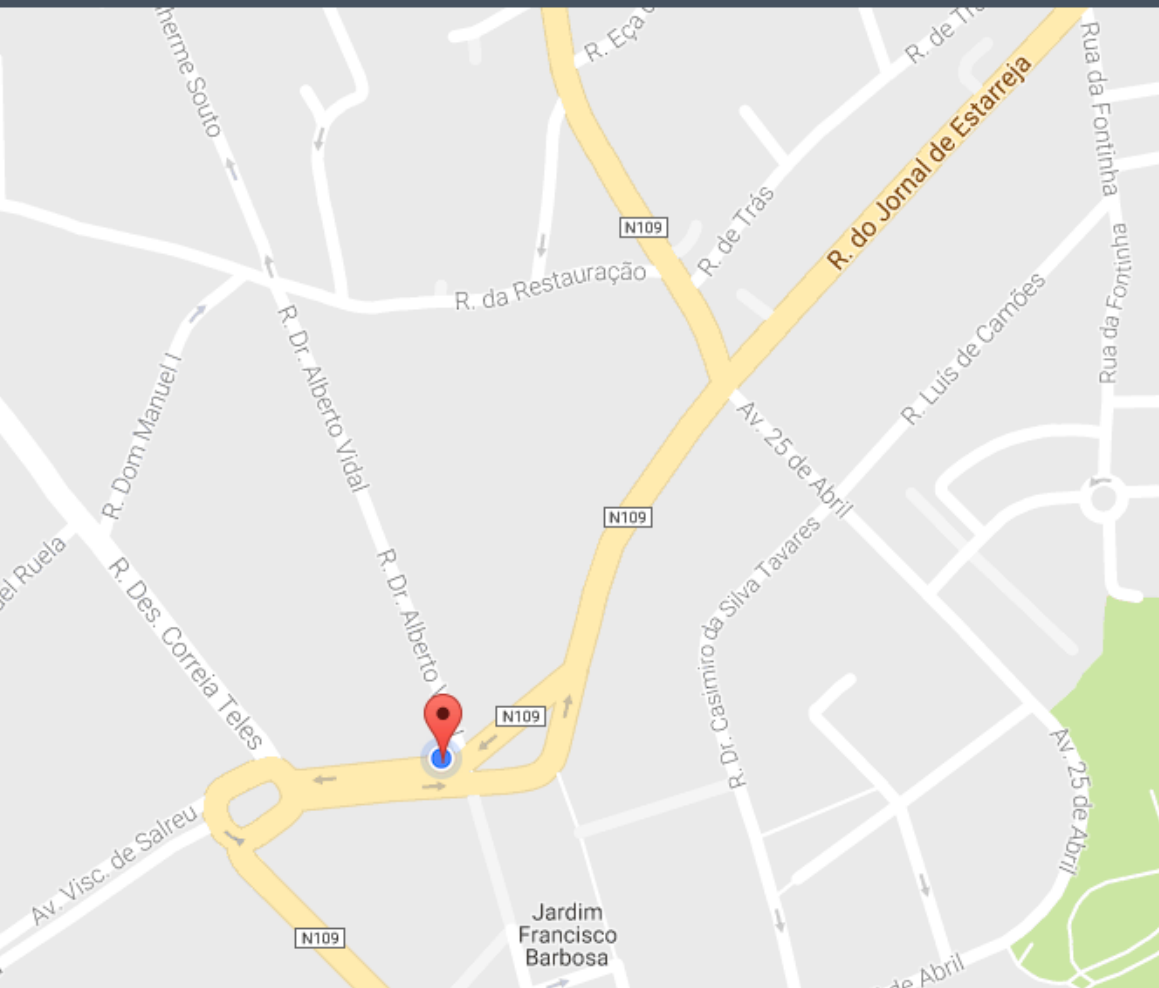
Found an area that needs improvement?
Register it here so that all members of
the community can help you solve the
problem.

Start

Report

▼ EN

Hi, Milene!



2 What should be done here?

Select the category that better describes the issue you see in your area.



Trees



Invasive species



Litter



Wildlife shelters



Organic vegetable garden



Wildlife pond

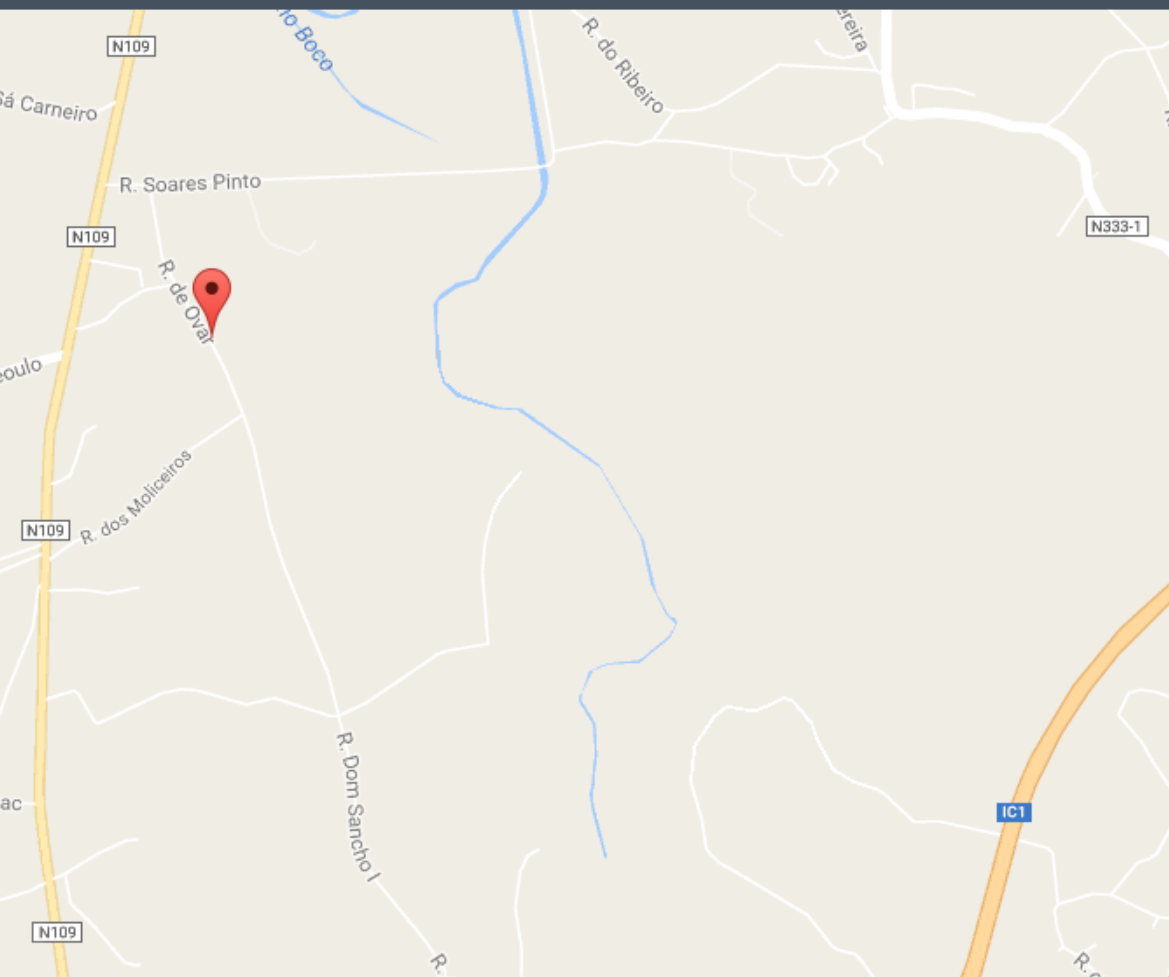


Environmental volunteering

Compensate

▼ EN

Hi, Milene!



2 What have you done?

From the following categories, select the ones that best define your compensation action.



Trees



Invasive species



Litter



Wildlife shelters



Organic vegetable garden



Wildlife pond



Environmental volunteering



Eco-Ranking

9

Compensations



All countries ▼

11

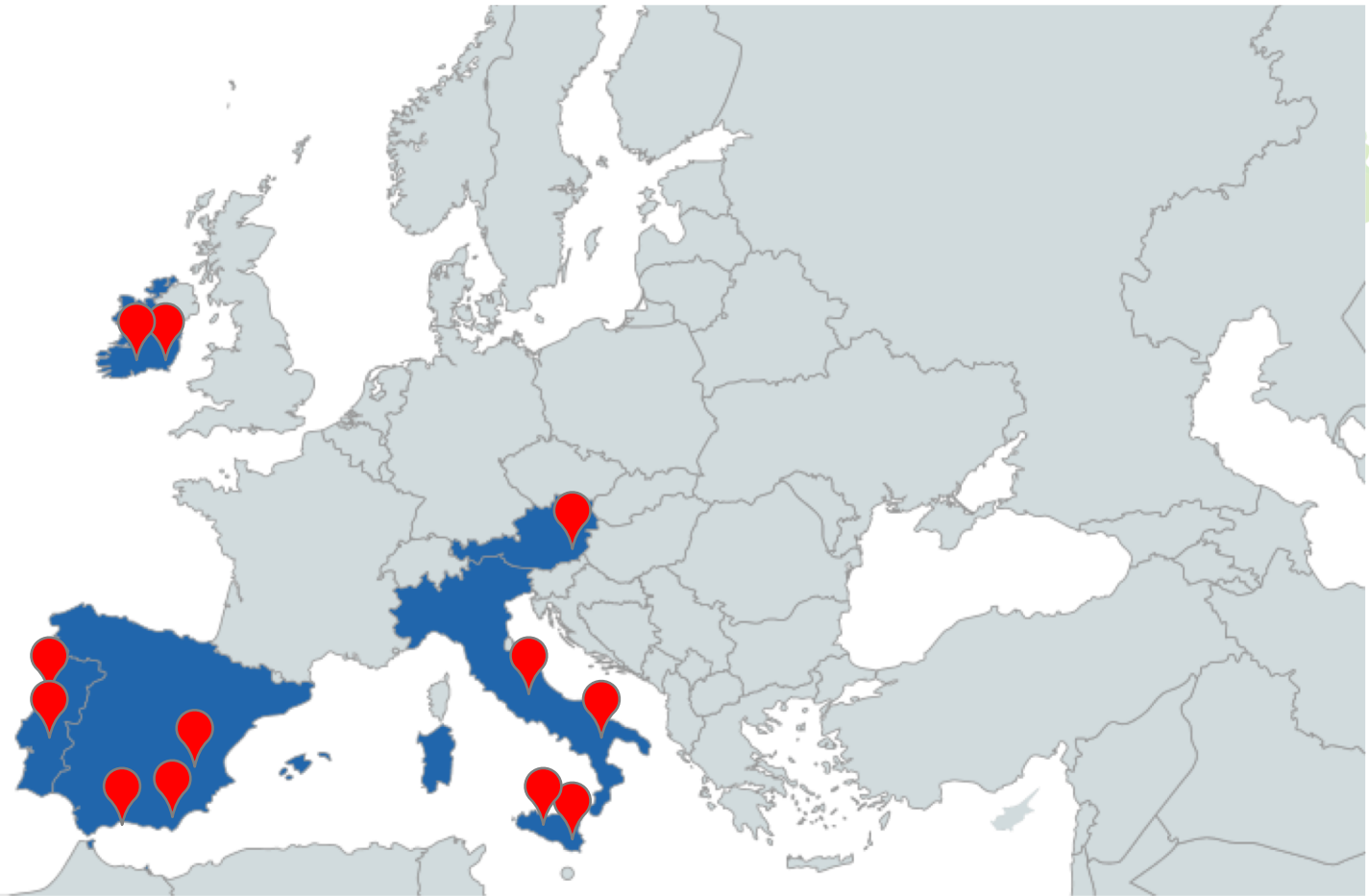
Reports

Top Users

Top Countries

Rank		Name			Total
1		Lourenço			1396
2		imprintplus			712
3		Armendo			530

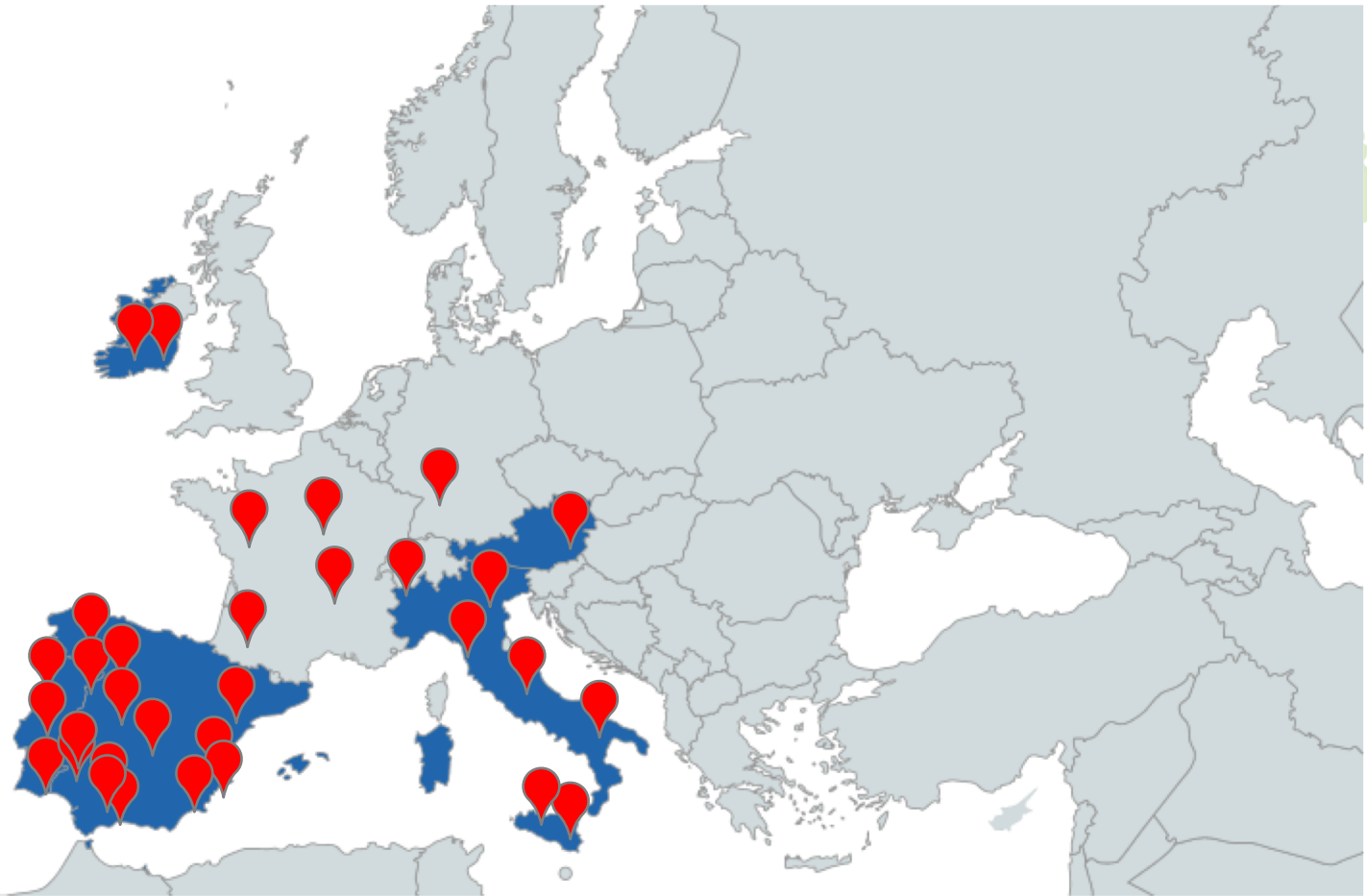
IMPRINT+ Identificação de locais ecologicamente degradados



Erasmus+

Imprinting an ecological compensation reasoning on society by means of young citizens

IMPRINT+ Identificação de locais ecologicamente degradados



Erasmus+

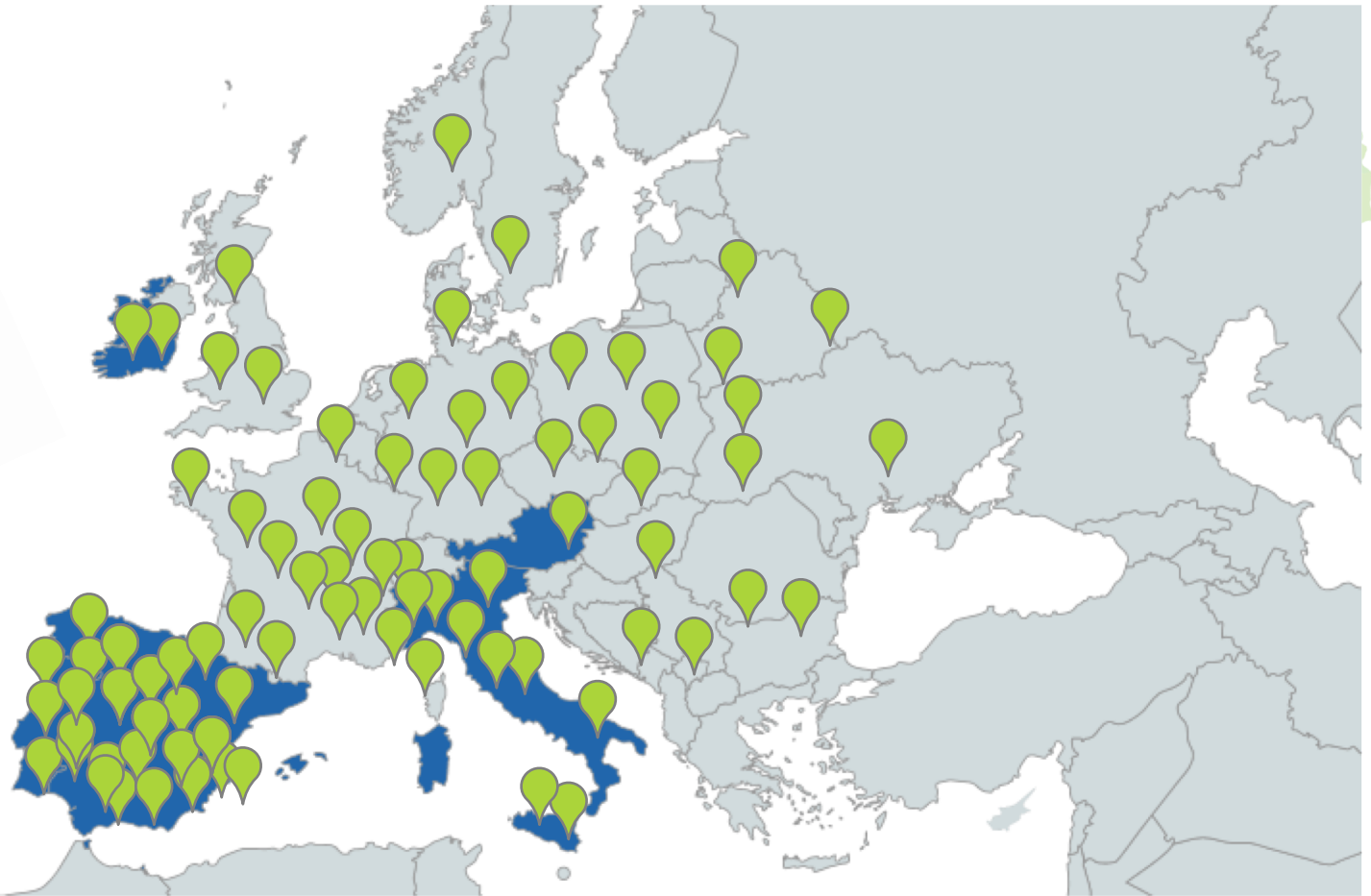
Imprinting an ecological compensation reasoning on society by means of young citizens

IMPRINT+ Identificação de locais ecologicamente degradados



Erasmus+

Imprinting an ecological compensation reasoning on society by means of young citizens



Pensar globalmente

Agir localmente

Mudar individualmente



PORTUGAL- Coordenador

Universidade de Aveiro
Departamento de Biologia

Dra. Milene Matos
milenamatos@ua.pt

universidade de aveiro
departamento de biologia



PORTUGAL

Município de Lousada

Dr. Manuel Nunes
manuel.nunes@cm-lousada.pt



ESPAÑA

IES Pedro Jiménez Montoya

Dr. Manuel Navarro Reyes
manuel.navarro@iespedrojimenezmontoya.es



ÍTÁLIA

I.I.S.S. "Cipolla-Pantaleo-Gentile"

Dra. Anna Neri
neri.anna@email.it



IRLANDA

Leave no Trace

Dra. Maura Lyons
info@leavenotraceireland.org



ÁUSTRIA

**E.N.T.E.R. - European Network
for Transfer and Exploitation of EU Project Results**

Dra. Petra Kampf
petra.kampf@enter-network.eu

